

AUTOMATIC PLASTIC LUMBER EXTRUSION LINE



PLASTIC LUMBER IS USED TODAY AS A SUBSTITUTE FOR WOOD IN SEVERAL SCENARIOS, INCLUDING CIVIL CONSTRUCTION AND URBAN FURNITURE.

REDUCING LANDFILL WASTE BY REUSING PLASTIC MATERIALS TO CREATE MORE SUSTAINABLE NEW PRODUCTS THAT WILL HAVE MANY LONG- TERM BENEFITS FOR THE ENVIRONMENT, REDUCES OUR OVERALL CARBON FOOTPRINT
RECYCLED PLASTIC LUMBER IS A PERFECT CHOICE TO SOLVE THE PROBLEMS OF THE TRADITIONAL WOOD, WORKS WITH HIGH-CONTAMINATED PLASTICS WITHOUT WASHING THEM REDUCING THE MAINTENANCE COSTS TO ZERO.



periplast
extrusion expertise

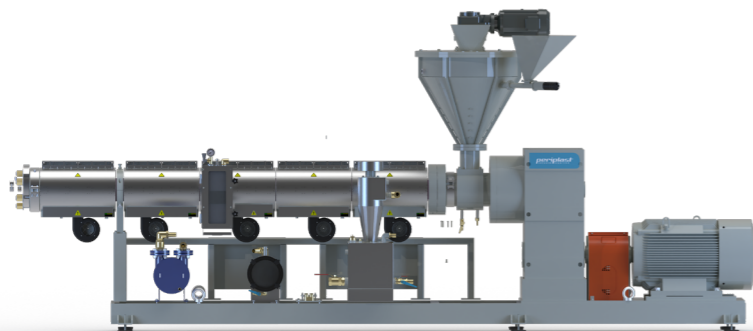
LINE ELEMENTS



||| LINE CONTROL |||



||| FEEDING |||



||| EXTRUDER |||

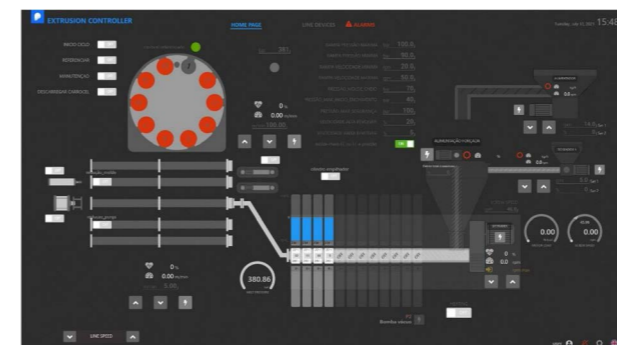
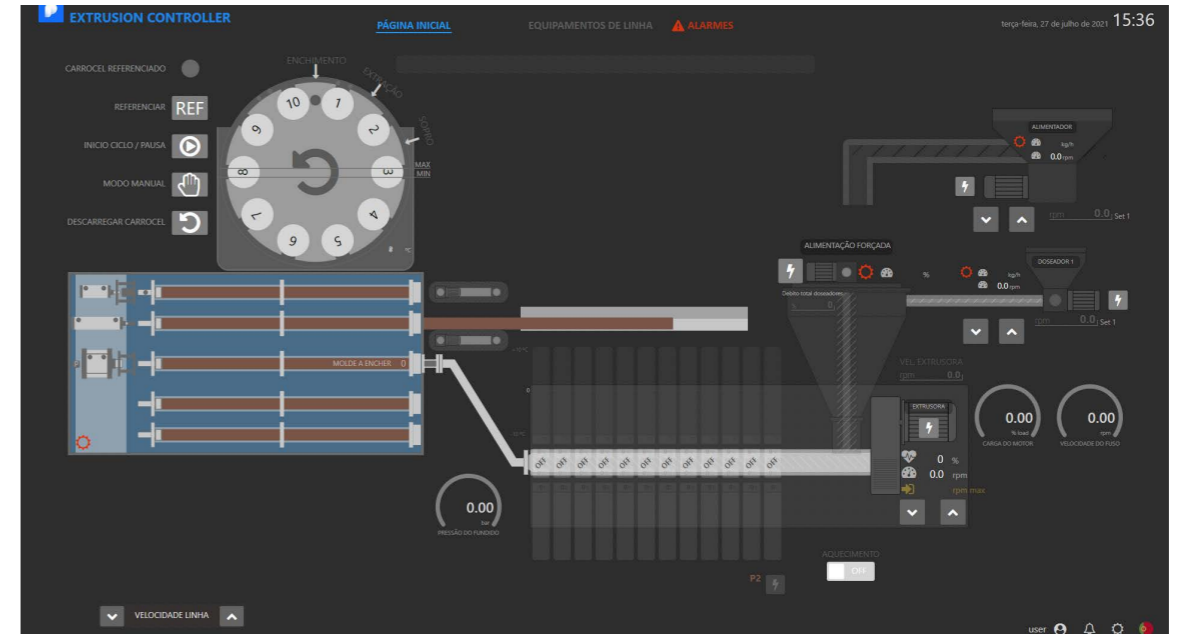


||| MOULDING GROUP |||



||| COLLECTING TABLE |||

LINE CONTROL

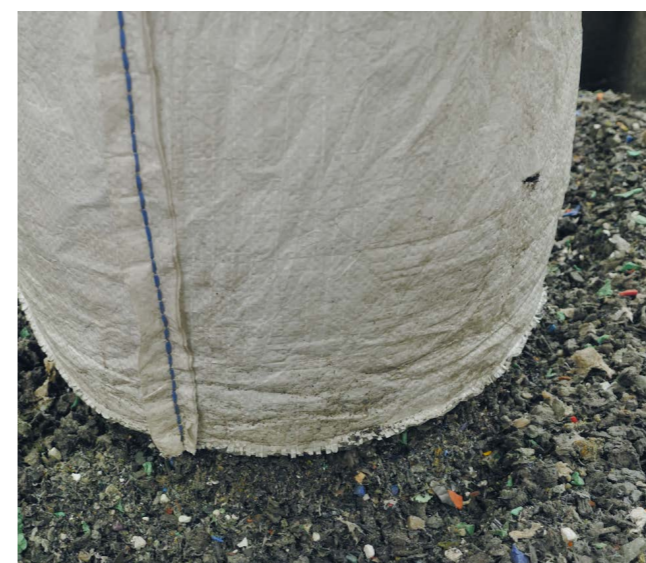


Software that allows you to control the entire line synchronously and automatically, with the operator only intervening once in each cycle to remove the bars/load more raw material.

MAIN FEATURES

- ✓ PRODUCTION HISTORY
- ✓ RECIPES
- ✓ CONTROL EVERY COMPONENT OF THE LINE:
 - Feeding (force feeding and dosers)
 - Extrusion (Temperature, speed, degassing, pressure)
 - Mould Group position
 - Water temperature
 - Extraction

FEEDING AND FORCE FEEDING

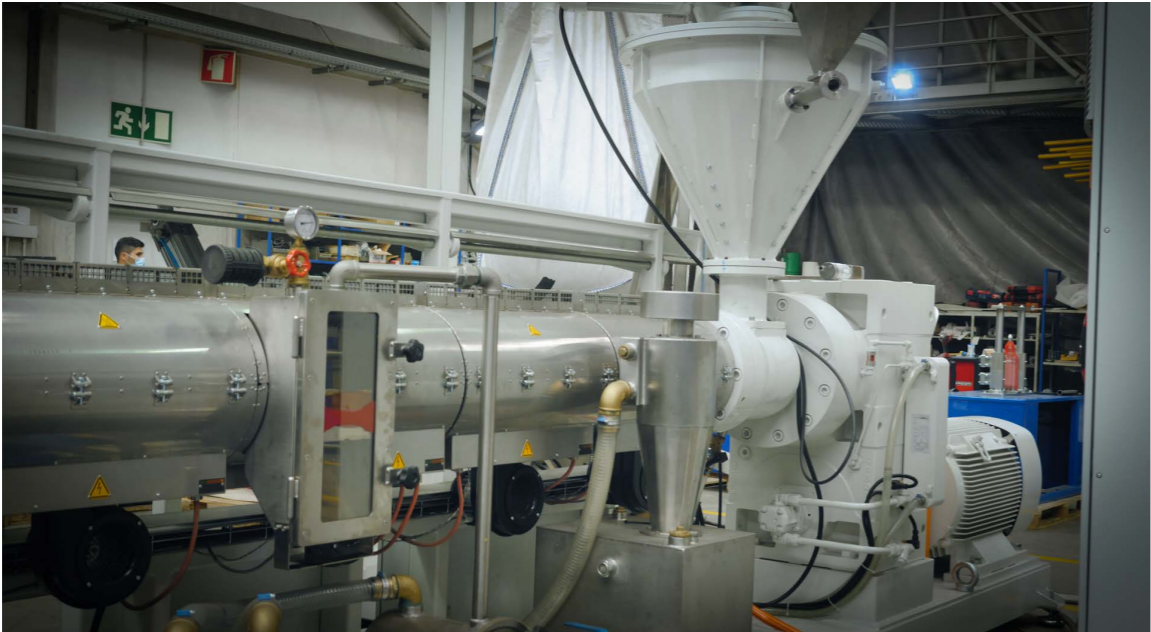


FEEDING SYSTEM

- ✓ BIG BAG SYSTEM
- ✓ WORM SCREW (WITH ALERT FOR LACK OF RAW MATERIAL)
- ✓ FORCE FEEDING (ALLOWS MIXING LDPE FILM)
- ✓ DOSER FOR COLOURING OR FIBRES COULD BE INCLUDED

PERIPLAST FEEDING SYSTEM

EXTRUDER



Extruder with a capacity of more than 300 kg/h

MAIN FEATURES

- ✓ INSULATED PANELS THAT GUARANTEE THERMAL HIGH EFFICIENCY
- ✓ POWERFUL VACUUM DEGASSING
- ✓ CLOSED LOOP CIRCUIT OF CONTAMINATED WATER REDUCING FRESHWATER WASTE
- ✓ VERY ACCURATE TEMPERATURE CONTROL

MOULDING GROUP

Moulds holding group unit for 10 4-metre-long moulds. The complete cycle time corresponds approximately to 1 mould filling, 8 mould in cooling and 1 mould being extracted.

Extraction system by pneumatic cylinder assisted by a haul-off for parallel positioning to the plasticizing unit.

Moulding unit installed inside a stainless-steel cooling tank in a closed water circuit with controlled temperature to optimise cooling.



TECHNICAL DETAILS:

- ✓ **Maximum production:**
300 kg/h
- ✓ **Total installed power:**
175 kW
- ✓ **Power consumption (@250kg/h):**
60 kW/h
- ✓ **Cooled water:**
15° C
- ✓ **Air consumption:**
600 lt/min
- ✓ **Operator (workers):**
1 for 2 lines
- ✓ **Moulds length:**
0,1 m to 4 m
- ✓ **Mould (WxH):**
Square 150x150 mm
Rectangular 230x20 mm
Round 200 mm

EXTRACTION & COLLECTING TABLE

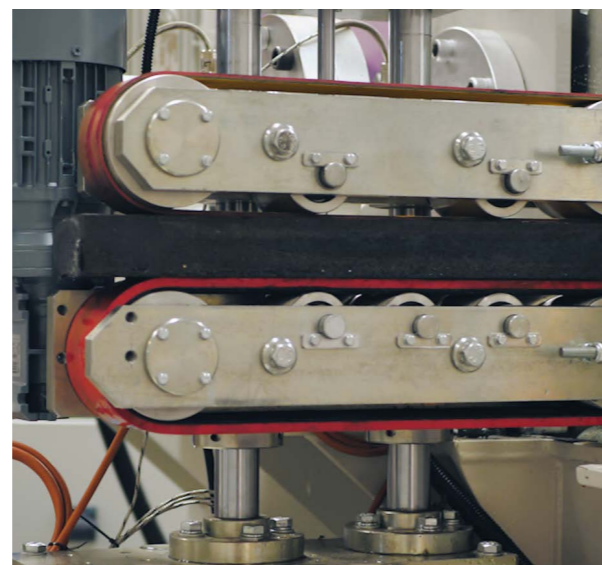


FINAL PRODUCT



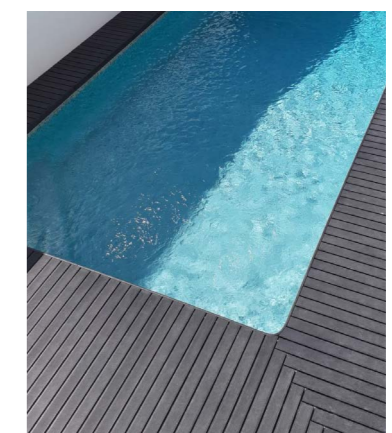
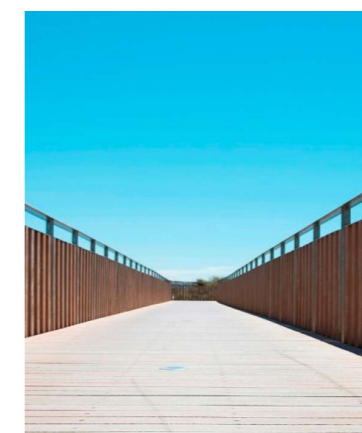
Dumping table pneumatically driven.

Capable of collecting more than 10 pieces of 100 x 50 plastic lumber beams.



PERIPLAST EXTRACTION & COLLECTING TABLE

The plastic lumber line is designed to produce **round, square, and rectangular beams**, from 0,1 to 4 metres (**using the same mould**).
The tops of the beams - round, square or rectangular - can have a straight, pointed or half-moon shaped finish.
On the beams sides it is possible to make tongue-and-groove joints or slip resistant footpath planks.



PERIPLAST FINAL PRODUCT



periplast
extrusion expertise



VIDEO HERE

CONTACT US NOW!



Rua dos Marrazes, Lote 32
Zona Industrial Cova das Faias
2415-807 Leiria
PORTUGAL



Email: comercial@periplast.pt



Phone: +351 244 859 990