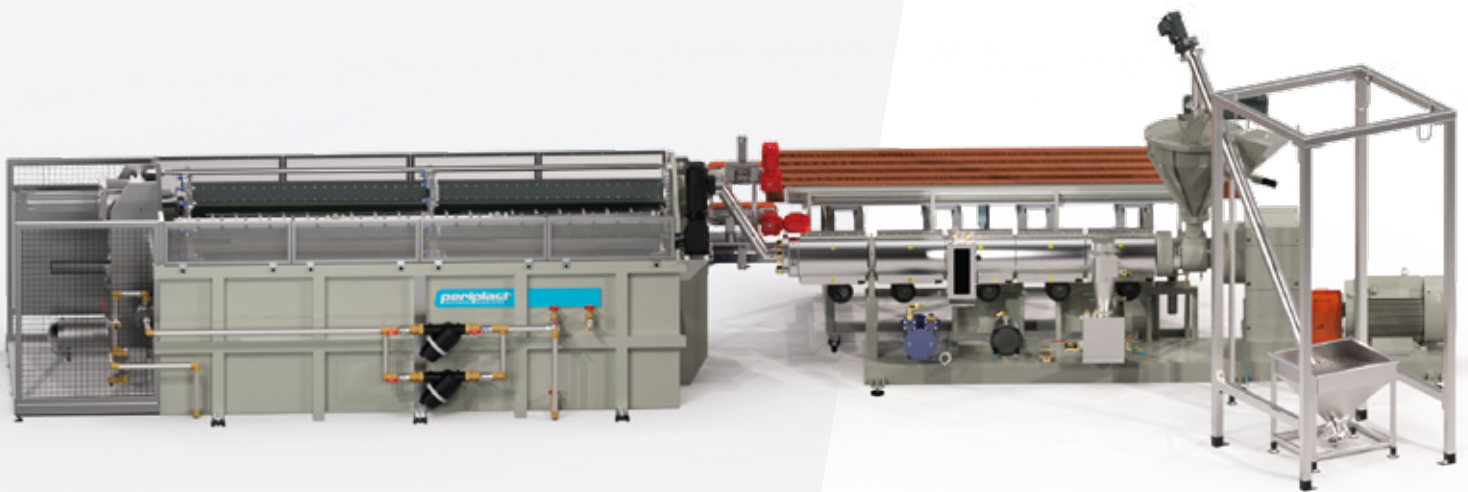


AUTOMATIC PLASTIC LUMBER EXTRUSION LINE



ECO FRIENDLY
SUSTAINABLE
CIRCULAR ECONOMY



Plastic lumber is used today as a **substitute for wood in several scenarios**, including civil construction and urban furniture.

Reducing landfill waste by reusing plastic materials to create **more sustainable new products that will have many long-term benefits for the environment**, reduces our overall carbon footprint

Recycled plastic lumber is a perfect choice to solve the problems of the traditional wood, works with high-contaminated plastics without washing them **reducing the maintenance costs to zero**.

Our machines save every year:

- **9 million tons** of plastic from ending up in landfills
- **35,000 trees** from being cut down



periplast
extrusion expertise

LINE ELEMENTS

1



2



3



4

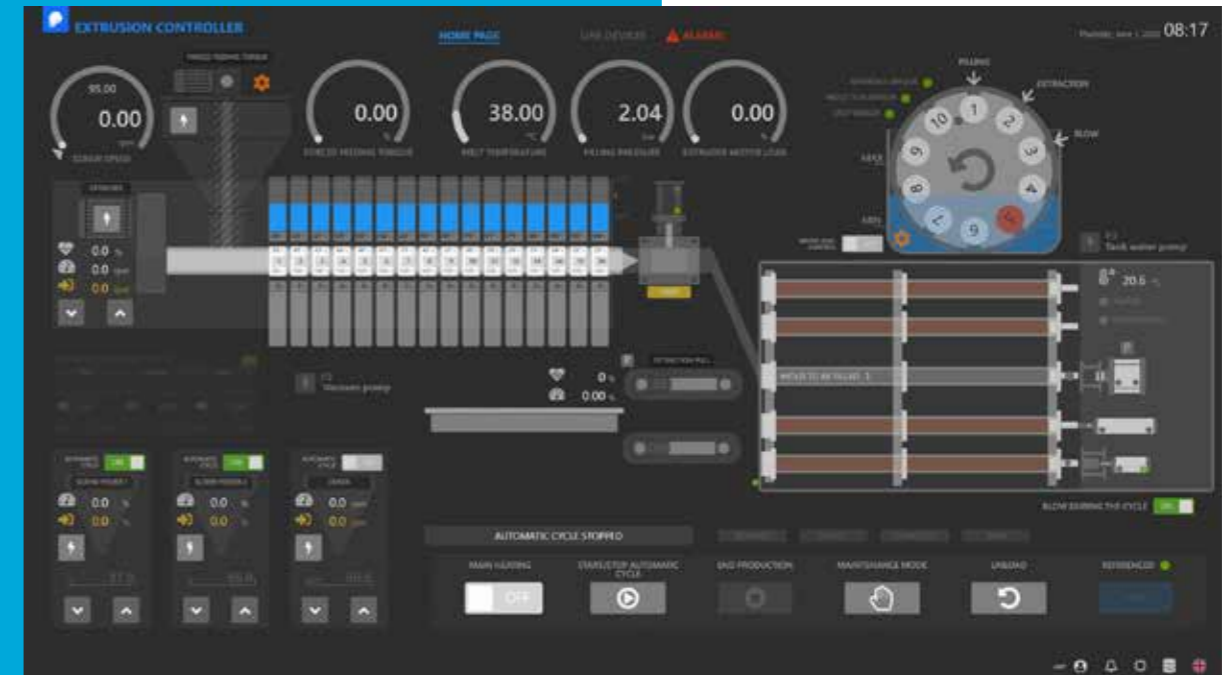


5



- 1. Line control
- 2. Feeding
- 3. Extruder
- 4. Moulding group
- 5. Collecting table

LINE CONTROL



Software that allows you to control the entire line synchronously and automatically, with the operator only intervening once in each cycle to remove the bars/load more raw material.

MAIN FEATURES

- ✓ Production history
- ✓ Material recipes per Mold
- ✓ Control every component of the line
 - Feeding (force feeding and dosers)
 - Extrusion (Temperature, speed degassing, pressure)
 - Mould Group position
 - Water temperature
 - Extraction

FEEDING AND FORCE FEEDING



FEEDING SYSTEM

- ✓ Big bag system
- ✓ Force feeding (allows mixing LDPE film)
- ✓ Doser for colouring or fibres could be included



EXTRUDER



Extruder with a capacity of more than 300 kg/h

MAIN FEATURES

- ✓ Insulated panels that guarantee thermal high efficiency
- ✓ Powerful vacuum degassing
- ✓ Closed loop circuit of contaminated water reducing freshwater waste
- ✓ Very accurate temperature control
- ✓ 200 BAR working pressure

MOULDING GROUP

Moulds holding group unit for 10 4-metre-long moulds. The complete cycle time corresponds approximately to 1 mould filling, 8 mould in cooling and 1 mould being extracted.

Extraction system by pneumatic cylinder assisted by a haul-off for parallel positioning to the plasticizing unit.

Moulding unit installed inside a stainless-steel cooling tank in a closed water circuit with controlled temperature to optimise cooling.



TECHNICAL DETAILS:

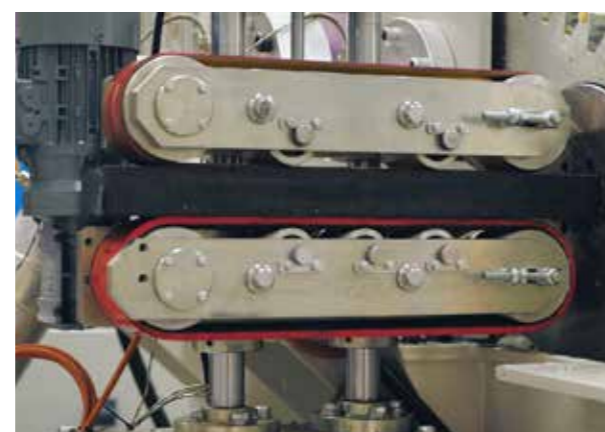
- ✓ Maximum production: 300 kg/h
- ✓ Total installed power: 200 kW
- ✓ Power consumption (@250kg/h): 60 kW/h
- ✓ Cooled water: 15° C
- ✓ Air consumption: 600 lt/min
- ✓ Operator (workers): 1 for 2 lines
- ✓ Moulds length: 1 m to 4 m
- ✓ Mould (WxH): Square 150x150 mm
Rectangular 200x50 mm
Round 200 mm

EXTRACTION & COLLECTING TABLE



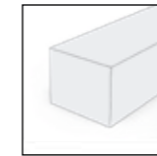
Discharging table pneumatically driven.

Capable of collecting more than 10 pieces of 100×50 plastic lumber beams.



MOLDS AVAILABLE

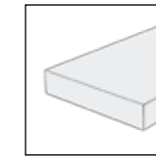
Standard Profiles



Square Pole



Round Post



Regular Board

Wall/ Floor



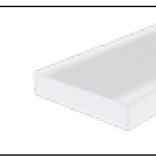
Board T&G



Decking with Grooves



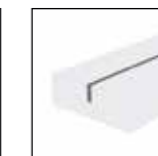
Decking Anti - Slip Positive/Negative



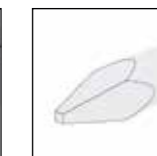
Specials



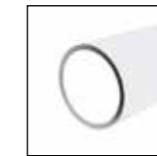
Palisade



Reinforced Bar



With tip



Hollow



Reinforced Tube Round and Square

FINAL PRODUCT

Multiple length options available with the same mold, ranging from 1m to 4m.

These images showcase real-life applications of the materials produced by this line, demonstrating their use in construction, decking, and outdoor projects





Address

Rua de Marrazes, lote 32
Zicofa 2415-807 Leiria
Portugal

Phone

+351 244 859 990

Online

comercial@periplast.pt
www.periplast.pt

